



MONTHLY MEMBERSHIP PROGRESS REPORT

District 322C4

Results as of: 12/31/2017

GMT: SWADESH RANJAN SAHA

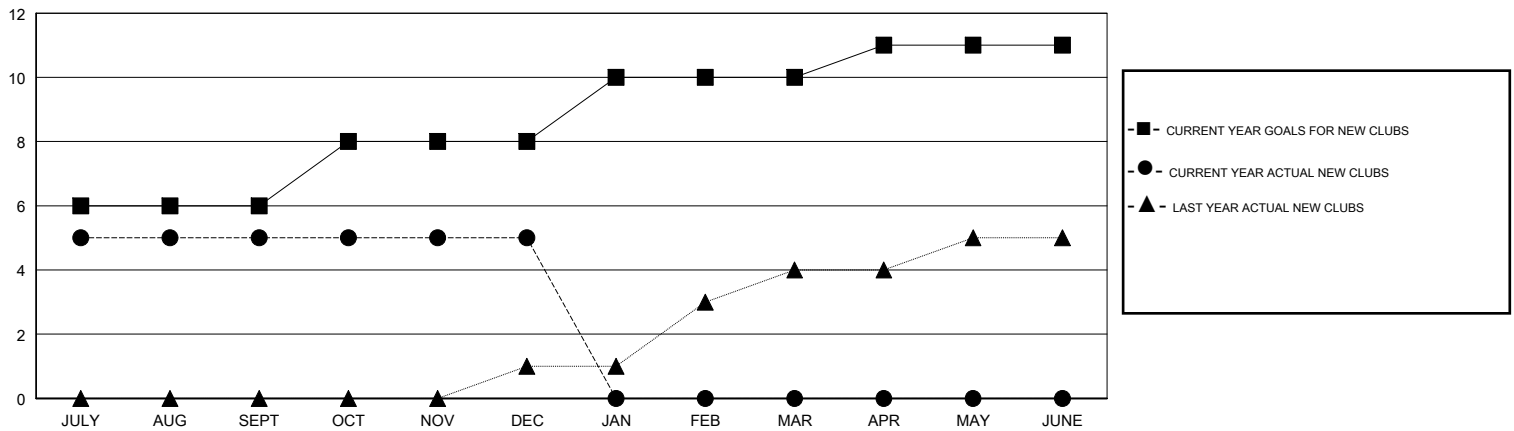
LOCATION INDIA

GMT CA

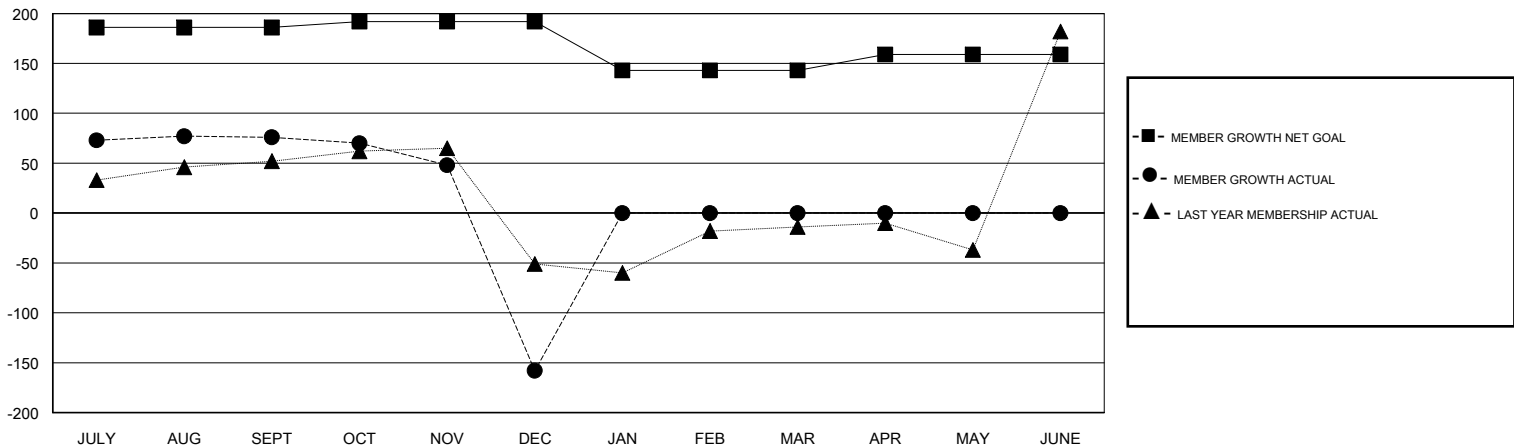
Clubs			
RESULTS FOR 2017-2018			
QUARTER	NEW CLUB GOAL	NEW CLUBS	DROPPED CLUBS
JULY/AUG/SEPT	6	5	1
OCT/NOV/DEC	2	0	8
JAN/FEB/MAR	2	0	0
APR/MAY/JUNE	1	0	0

Members			
RESULTS FOR 2017-2018			
QUARTER	MEMBER GROWTH NET GOAL	MEMBER GROWTH ACTUAL	DROPPED MEMBERS ACTUAL (including transfers)
JULY/AUG/SEPT	186	111	35
OCT/NOV/DEC	6	5	239
JAN/FEB/MAR	-49	0	0
APR/MAY/JUNE	16	0	0

GOALS AND ACTUAL NEW CLUBS CUMULATIVE



GOALS AND ACTUAL MEMBERS CUMULATIVE



DROPPED CLUBS: 9

12 CLUBS OF 53 ADDED 1 OR MORE NEW MEMBERS

GENDER DISTRIBUTION

MALE 938 (67.24%)
 FEMALE 457 (32.76%)
 Women Percentage Fiscal Year Goal: 36%

DROPPED MEMBERS

DECEASED	0
CLUB CANCELLED	198
OTHER	76
TOTAL	274

[CLICK HERE FOR CUMULATIVE MEMBERSHIP DATA](#)

TOTAL FAMILY UNIT MEMBERS	575
FAMILY MEMBERS PAYING HALF DUES	318